

Luciferase Cell Lines



Imprecise *in vivo* animal models are a daily reality for cancer biologists. They cloud the results of biological mechanism studies and drug development work because it is often difficult to image and quantify engrafted tumors. Luciferase reporter cell lines provide a relatively simple, robust, and highly sensitive means to measure biological processes and to assess drug efficacy in animal models through bioluminescence imaging. They offer new tools for both *in vitro* luminescent assays and *in vivo* live animal bioluminescent imaging.

- Used to establish *in vivo* tumor models
- Quantifiable luciferase expression
- Verified Luc2 expression stability
- Derived from commonly used human and mouse cell lines
- Developed by single cell cloning
- High signal/background ratio

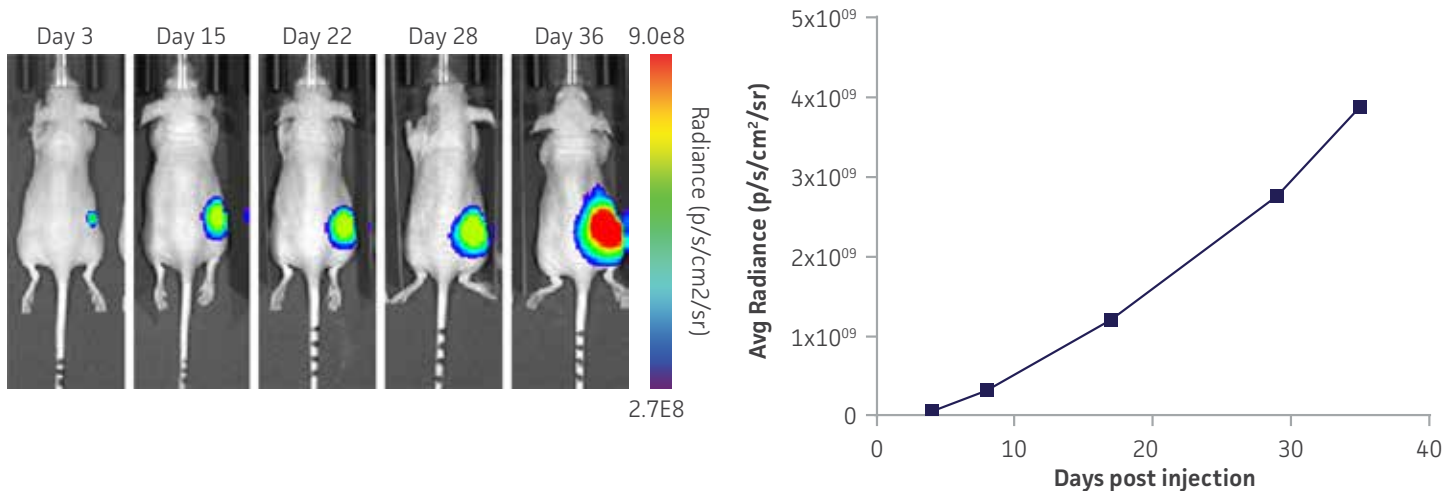


FIGURE 1. Luciferase-expressing reporter cell lines can be used in *in vivo* animal bioluminescent imaging. IDH1 Mutant U-87 Isogenic-Luc2 cells (3×10^6) were injected subcutaneously into the dorsal region near the thigh of female nude mice. Tumor growth was monitored weekly using an optical bioluminescence imaging system. *In vivo* bioluminescence imaging demonstrated the progression of tumors, and the utility of luciferase-expressing reporter cell lines (here IDH1 Mutant U-87 Isogenic-Luc2) in xenograft animal model studies.

Learn more at www.atcc.org/luciferase

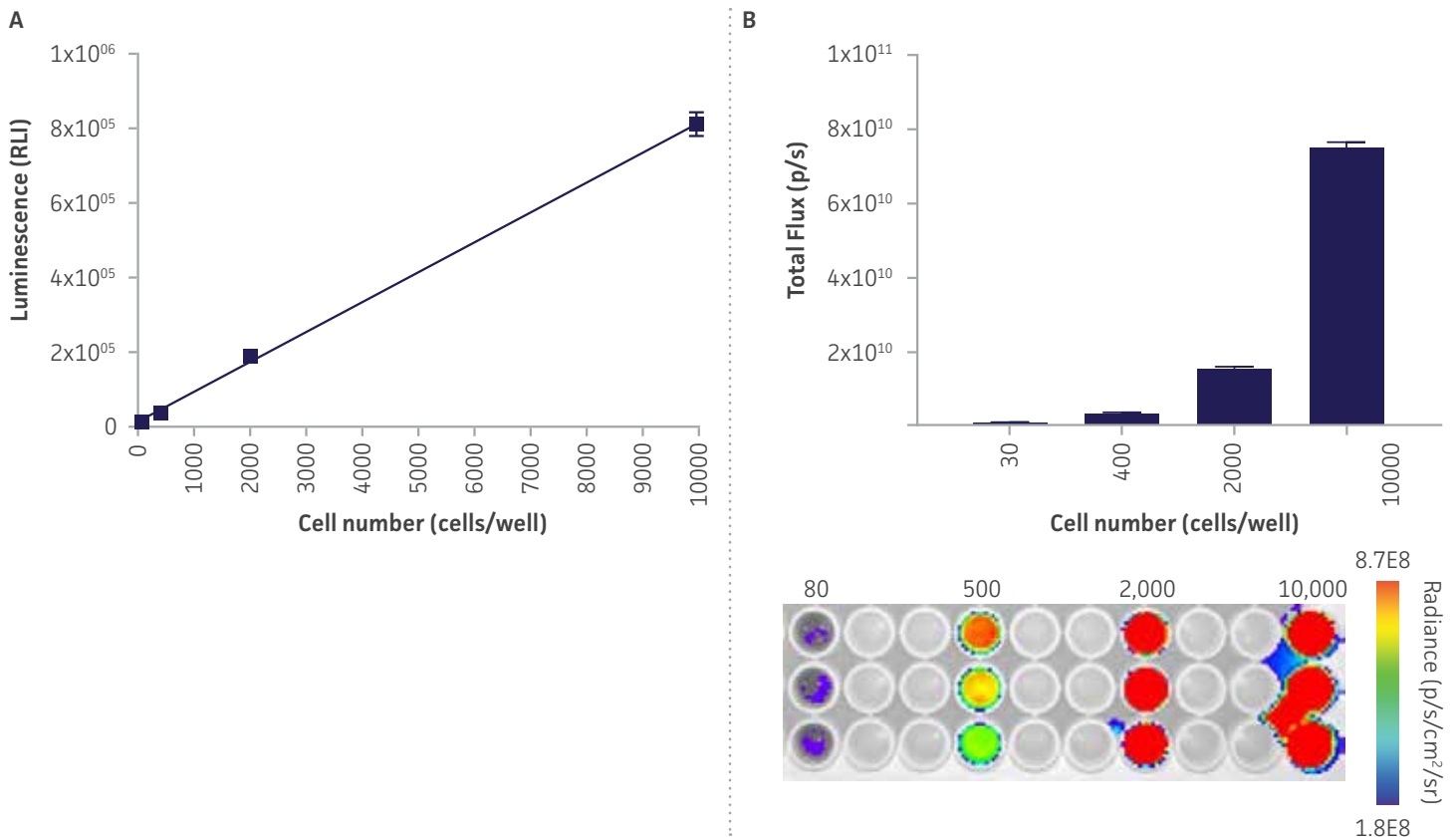


FIGURE 2. Luciferase-expressing reporter cells demonstrate linear, quantifiable signal in *in vitro* bioluminescence studies. IDH1 mutant-U-87 Isogenic-Luc2 were seeded in a 96-well plate at indicated cell numbers per well, and commercially prepared luciferase substrate preparation was added to the indicated wells. The luminescence of the plate was read within 10 minutes using a luminescence plate reader (A) and determined to have a linear correlation of bioluminescence intensity with cell numbers. (B) The plate was imaged using *in vivo* optical imaging system to quantify that photons emitted per cell. The resulting bioluminescence curves indicate that the luciferase-expressing reporter cells can be used to assess cell viability in live, unfixed cells.

Luciferase-Labeled Cell Lines

ATCC maintains luciferase-expressing reporter cell lines derived from the most commonly used cells in molecular imaging studies. The addition of the luciferase reporter to these cell lines increases their utility by allowing for real-time imaging of the tumors.

Isogenic Luciferase-Labeled Cell Lines

By utilizing the CRISPR/Cas9 gene editing, ATCC offers isogenic cell models harboring critical drug-resistant or -sensitive mutations that also express the luciferase reporter. These advanced models can be used in *in vivo* studies to identify novel, personalized treatment regimens.

Learn more at www.atcc.org/luciferase

TABLE 1. Luciferase-Labeled Human Cell Lines


ATCC® No.	Designation	Disease	Tissue
CCL-213-LUC2™	Daudi-Luc2 <i>Coming soon!</i>	Lymphoma, Burkitt's	Blood
CCL-240-LUC2™	HL-60-Luc2 <i>Coming soon!</i>	Leukemia	Blood
CCL-243-LUC2™	K-562-Luc2	Chronic Myelogenous Leukemia	Bone Marrow
HTB-96-LUC2™	U-2 OS-Luc2	Osteosarcoma	Bone
CRL-2003-LUC2™	TF-1-Luc2	Leukemia	Bone Marrow
CRL-2003IG-LUC2™	IDH2 R140Q mutant TF-1-Luc2	Leukemia	Bone Marrow
HTB-14-LUC2™	U-87 MG-Luc2	Glioma	Brain
HTB-14IG-LUC2™	IDH1 R132H mutant U-87MG-Luc2	Glioma	Brain
HTB-22-LUC2™	MCF7-Luc2 <i>Coming soon!</i>	Adenocarcinoma	Breast
CCL-247-LUC2™	HCT 116-Luc2	Carcinoma	Colon
CCL-121-LUC2™	HT-1080-Luc2 <i>Coming soon!</i>	Fibrosarcoma	Connective
CCL-185-LUC2™	A549-Luc2	Lung Carcinoma	Lung
CCL-185IG-LUC2™	EML4-ALK Fusion A549-Luc2	Lung Carcinoma	Lung
CRL-1469-LUC2™	PANC-1-Luc2	Carcinoma, Epithelioid	Pancreas
CRL-1435-LUC2™	PC-3-Luc2 <i>Coming soon!</i>	Adenocarcinoma	Prostate
CRL-1740-LUC2™	LNCaP clone FGC-Luc2 <i>Coming soon!</i>	Carcinoma	Prostate
CRL-1555-LUC2™	A-431-Luc2	Carcinoma, Epidermoid	Skin
CRL-1619-LUC2™	A375-Luc2	Melanoma	Skin
CRL-1619IG-1-LUC2™	KRAS G13D A375-Luc2	Melanoma	Skin
CRL-1619IG-2-LUC2™	NRAS Q61K A375-Luc2 <i>Coming soon!</i>	Melanoma	Skin
CRL-5973-LUC2™	SNU-5-Luc2 <i>Coming soon!</i>	Gastric Carcinoma	Stomach
CRL-5974-LUC2™	SNU-16-Luc2 <i>Coming soon!</i>	Gastric Carcinoma	Stomach


TABLE 2. Luciferase-Labeled Mouse Cell Lines

ATCC® No.	Designation	Disease	Tissue
TIB-208-LUC2™	A20-Luc2 <i>Coming soon!</i>	Lymphoma	Blood
TIB-39-LUC2™	EL4-Luc2 <i>Coming soon!</i>	Lymphoma	Blood
CRL-2539-LUC2™	4T1-Luc2	Breast Cancer	Breast
CRL-2638-LUC2™	CT26.WT-Luc2 <i>Coming soon!</i>	Carcinoma	Colon
CRL-2639-LUC2™	CT26.CL25-Luc2 <i>Coming soon!</i>	Carcinoma	Colon
CRL-1642-LUC2™	LL/2-Luc2 <i>Coming soon!</i>	Lung Carcinoma	Lung
CRL-6323-LUC2™	B16-F1-Luc2	Melanoma	Skin
CRL-6475-LUC2™	B16-F10-Luc2	Melanoma	Skin


Learn more at www.atcc.org/luciferase

 10801 University Boulevard
Manassas, Virginia 20110-2209

 703.365.2700

 703.365.2701

 sales@atcc.org

 www.atcc.org

LCL-04-2019-v03

© 2019 American Type Culture Collection. The ATCC trademark and trade name, and any other trademarks listed in this publication are trademarks owned by the American Type Culture Collection unless indicated otherwise.